



sofTV.Presenter Version 2.0  
Readme



1	Introduction .....	1
2	Presenter Publishing Modes .....	1
3	Changes to softTV.Presenter dialog .....	2
3.1	Step 4: Set Video File or Live Stream URL.....	2
3.2	Step 6: Do Live Show .....	3
4	Built-in Encoding and Webcasting .....	3
5	Autopublishing .....	3
6	Notes from PowerPoint.....	4
7	Keyword Scanning.....	4
8	Full Screen Video .....	4
9	Chat.....	4
10	Viewer authentication through passwords..	<b>Error! Bookmark not defined.</b>
11	Viewer Logging .....	<b>Error! Bookmark not defined.</b>
12	Case of Generated Slide files.....	5
13	Option Include this slide in the Table of Contents .....	5
14	Option Include this slide in the presentation.....	6
15	Option set alternate directory for layouts.....	6
16	Publish Window now says Publish Status instead of Warnings or Errors during publish. ....	6
17	Can add extra parameters to video region through STV file .....	<b>Error! Bookmark not defined.</b>
18	Option Preload slides (DHTML Layouts Only).....	6
19	Option Show video controls.....	6
20	If no PowerPoint slides entered, use default value for slide names .....	7



## **1 Introduction**

softTV.net is proud to introduce a major upgrade to softTV.Presenter, its powerful and versatile tool for creating live and on-demand webcasts from PowerPoint files.

This readme file provides an overview of some of the new features in softTV.Presenter. For more details, you should consult the documentation online at <http://www.softv.net/help/presenter2>.

A quick overview of the some of the new features:

- Built-in ability to record, and broadcast live both Real and Windows Media streaming video
- Ability to import Notes from PowerPoint, and display them in sync with the video stream
- Support for softTV.Chat
- Many new Templates
- Set default values for all softTV.Presenter properties
- Ability to format the Table Of Contents and Thumbnails
- HTML Publishing mode – uses frames instead of DHTML regions
- SMIL publishing mode – creates presentations that play back entirely within the Real Player
- RealONE publishing mode – creates presentations that play back in the new RealONE player
- Keyword substitution and auto-publishing – powerful features for customizing layouts and lobby pages.
- Zoom Full Screen – new softTV command that allows video to be zoomed full-screen, then restored.

## **2 Presenter Publishing Modes**

softTV.Presenter now allows output to be published in four different modes - each has certain advantages and disadvantages. These modes are as follows:

- softTV DHTML Mode – Uses DHTML features of newer browsers. Pages can easily be created using softTV.Author.



- HTML Mode - Produces standard HTML and frames. Compatible with a very large range of browsers. Slides are not cached. Advanced sofTV.net trigger commands not supported.
- Real SMIL 1.0 Mode - Produces presentations that play back completely within the Real Player. Currently only supports Video On Demand presentations.
- RealONE Mode - Produces presentations that play back in the RealONE Player. Produces live or Video On Demand presentations.

Publishing Modes are selected automatically when you choose a layout.

### **3 Default values for sofTV.Presenter properties**

If you find that you are always setting the same values for some of the fields in sofTV.Presenter, you can set sofTV.Presenter to use default settings for all its properties. The default settings will automatically be used when sofTV.Presenter opens, and every time you select the menu choice File-New. To enable this, simply set all the sofTV.Presenter settings as you want for defaults, then select File-Save As, and save a file in the LayoutLibrary directory called default.xml. The LayoutLibrary directory is a sub-directory below the directory where sofTV.Presenter was installed.

### **4 Changes to sofTV.Presenter dialog**

The main sofTV.Presenter dialog has changed slightly to incorporate the encoding process. In Step 4, you now select whether you wish to create a Presentation using a Live or a Video On Demand video source.

#### **4.1 Step 4: Set Video File or Live Stream URL**

Use the radio buttons to select whether you wish to do a Video On Demand presentation, or a Live Presentation.

For Video on Demand Presentations, click on Change Video on Demand Settings to open the Video window where you can view your video clip, and enter slide synchronization timing. If you don't have a video clip, you can record a new clip by simply clicking on the record button. The video settings dialog is detailed a bit later in this document.

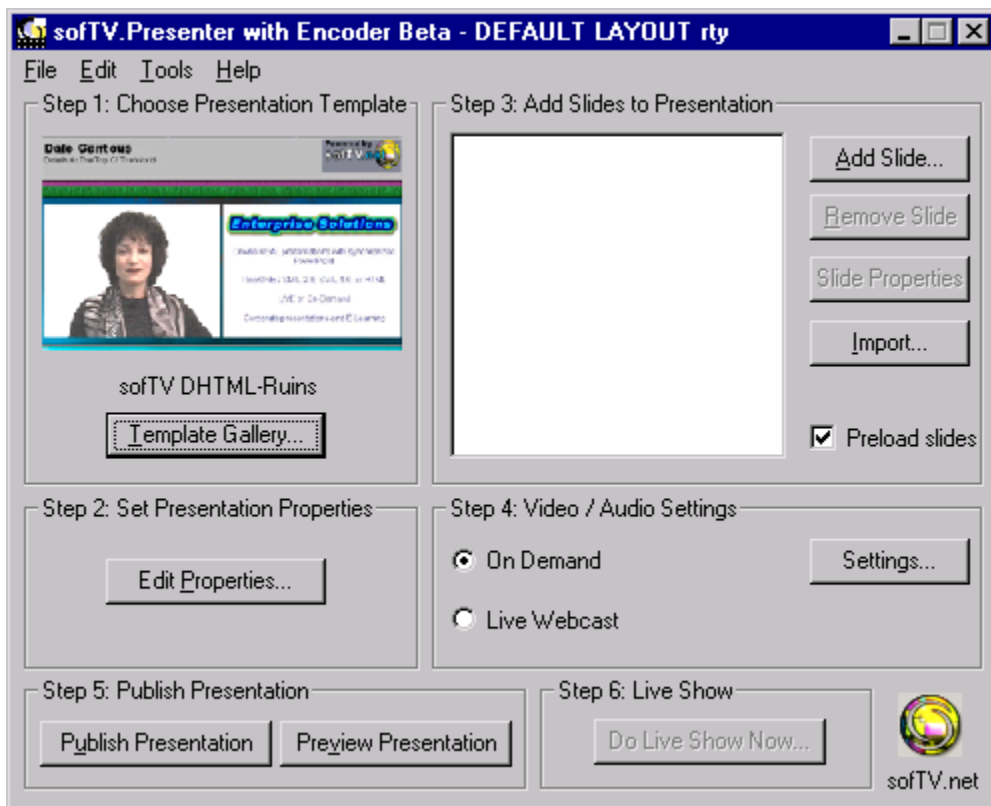
For Live Presentations, simply select the "Live Webcast" radio button. This will enable the "Step 6: Do Live Show" portion of the dialog.



## 4.2 Step 6: Do Live Show

We've added Step 6: Do Live Show to the sofTV.Presenter dialog, allowing the user to encode a live presentation directly from within sofTV.Presenter. This button is enabled when you select the "Live Webcast" setting in Step 4.

Clicking on "Do Live Show Now..." will open the Live Webcast window, which allows the user to start encoding video or audio at the desktop, and insert slide sync commands within the video or audio stream.



## 5 Built-in Encoding and Webcasting

sofTV.Presenter now includes the ability to record Real or Windows Media streaming video clips, as well as webcast live, all from within the sofTV.Presenter application.

## 6 Autopublishing

sofTV.Presenter will automatically publish all files located in the layout directory when it does a publish. This is useful if your custom layout contains extra graphics or html files that you want included in your published web page.



This also allows us to add viewer authentication and logging ASP files to a layout, and have them published automatically. We've created sample viewer logging and authentication files for use by the user.

## **7 Notes from PowerPoint**

sofTV.Presenter can now extract PowerPoint Notes, and display them on a web page in sync with the slides. Notes are entered for each slide in PowerPoint. For help with this consult the Microsoft PowerPoint documentation.

## **8 Keyword Scanning**

sofTV.Presenter automatically scans files for keywords when it does a publish. Any recognized keywords found will be replaced by values entered into sofTV.Presenter.

## **9 Full Screen Video**

sofTV.Presenter II now has the ability to trigger the Video Region to zoom to full screen for both Internet Explorer and Netscape.

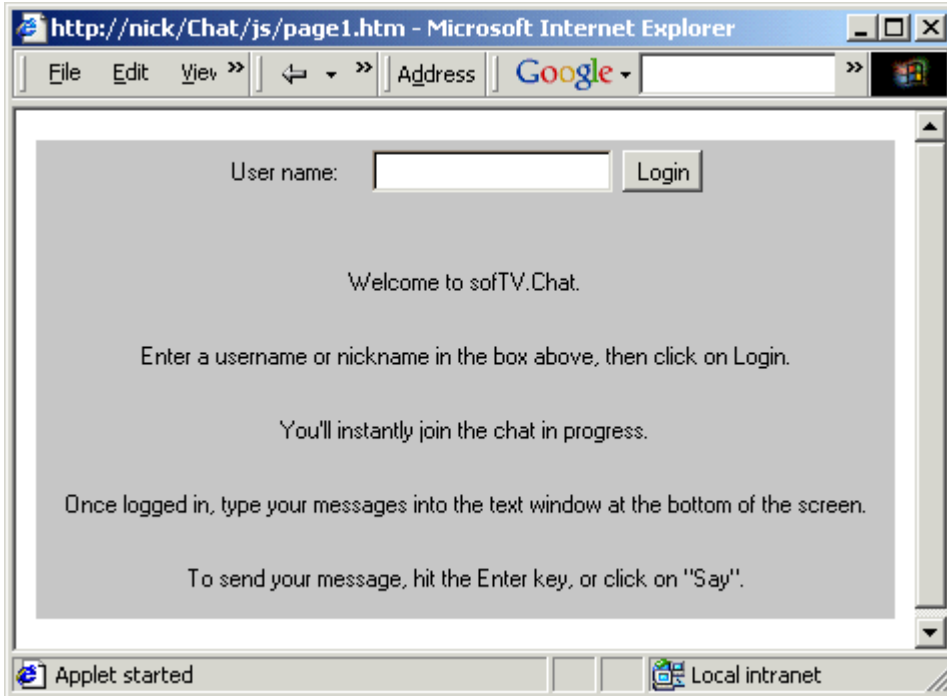
Using **sofTV\_Resize** trigger with Region: <Video region name>, X: 0, Y: 0, and Time: 0, sofTV.Presenter II is able to do a true full screen video - you do not see anything except the video.

A **sofTV\_Restore** trigger with Region : <Video region name> can be used to return the video region to its original size and placement.

## **10 sofTV.Chat**

sofTV.Chat is a simple chat application that works with sofTV.Presenter, and sofTV.Author.

Note that sofTV.Chat only works with the Microsoft IIS web server. sofTV.Chat uses a COM object on the server, and an Active Server Page in order to function.



## **11 Case of Generated Slide files**

Although Internet Explorer and Netscape are not Case sensitive, Unix web servers are. In order to accommodate a sofTV Presentation being hosted on a Unix server, sofTV.Presenter II now makes sure that the case of slide names matches case of slides exported by PowerPoint. As well, the case of slide names asked for by sofTV pages now matches default case of slides exported by PowerPoint.

## **12 Option Include this slide in the Table of Contents**

You can now specify whether a slide is included in the Table of Contents. This allows you to limit the size of your table of contents to include only major headings or sections of the presentation.

This property is changed by selecting a slide from the list of slides in Step 2, then clicking on "Properties."

Since clicking on a Table of Contents item causes the video to seek to this portion of the presentation, limiting the number of Table of Contents items also limits the areas of the video that a user can jump to. This is useful when you don't want users skipping portions of a presentation.



### **13 Option Include this slide in the presentation**

You can now choose to omit slides from being published as part of the presentation. This is useful in cases where the VOD version of a presentation may have less slides than the live version.

This property is changed by selecting a slide from the list of slides in Step 2, then clicking on "Properties."

Allows slides to be included for a live presentation, but then omitted from the VOD version - without affecting slide timing.

Allows slides to be removed from the web version, without editing the PowerPoint file.

### **14 Option set alternate directory for layouts**

Allows user to choose a network share as layout directory, and share layouts with everyone in a company.

This option is found in the Layouts menu item.

### **15 Publish Window now says Publish Status instead of Warnings or Errors during publish.**

Users were confused by "Warnings or Errors During Publish" wording. Especially if there were no warnings or errors.

### **16 Option Preload slides (DHTML Layouts Only)**

Users can specify if they want slides pre-loaded or not.

Default is to pre-load slides, ensuring that slide changes won't interfere with video stream.

### **17 Option Show video controls**

Users can choose to display the video controls or not.

Allows use of seek, volume, etc.



*Preliminary softTV.Presenter II Readme – Contents Not Final*

*Sales & Service Contact: [scott@softv.net](mailto:scott@softv.net)*

*R&D Contact: [rich@softv.net](mailto:rich@softv.net)*

*Tel: 613-729-6400, ext. 259 (Scott Abraham)*

## **18 If no PowerPoint slides entered, use default value for slide names**

If no PowerPoint slides are specified in layout, a default convention is assumed for slide names.

Assumes slides called Slide1.JPG, Slide2.JPG, etc.

Allows slides to be added to a presentation by some outside process.